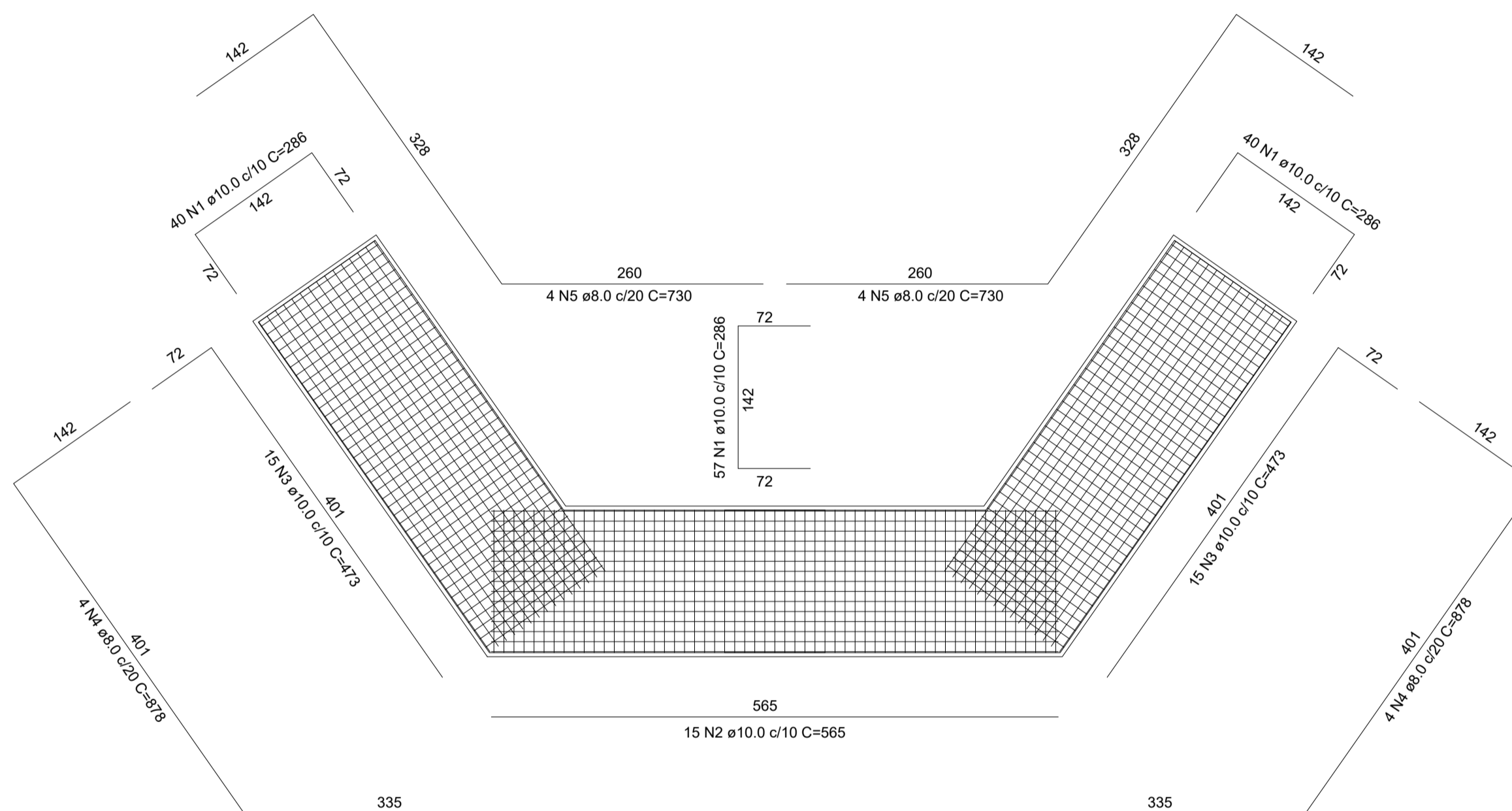
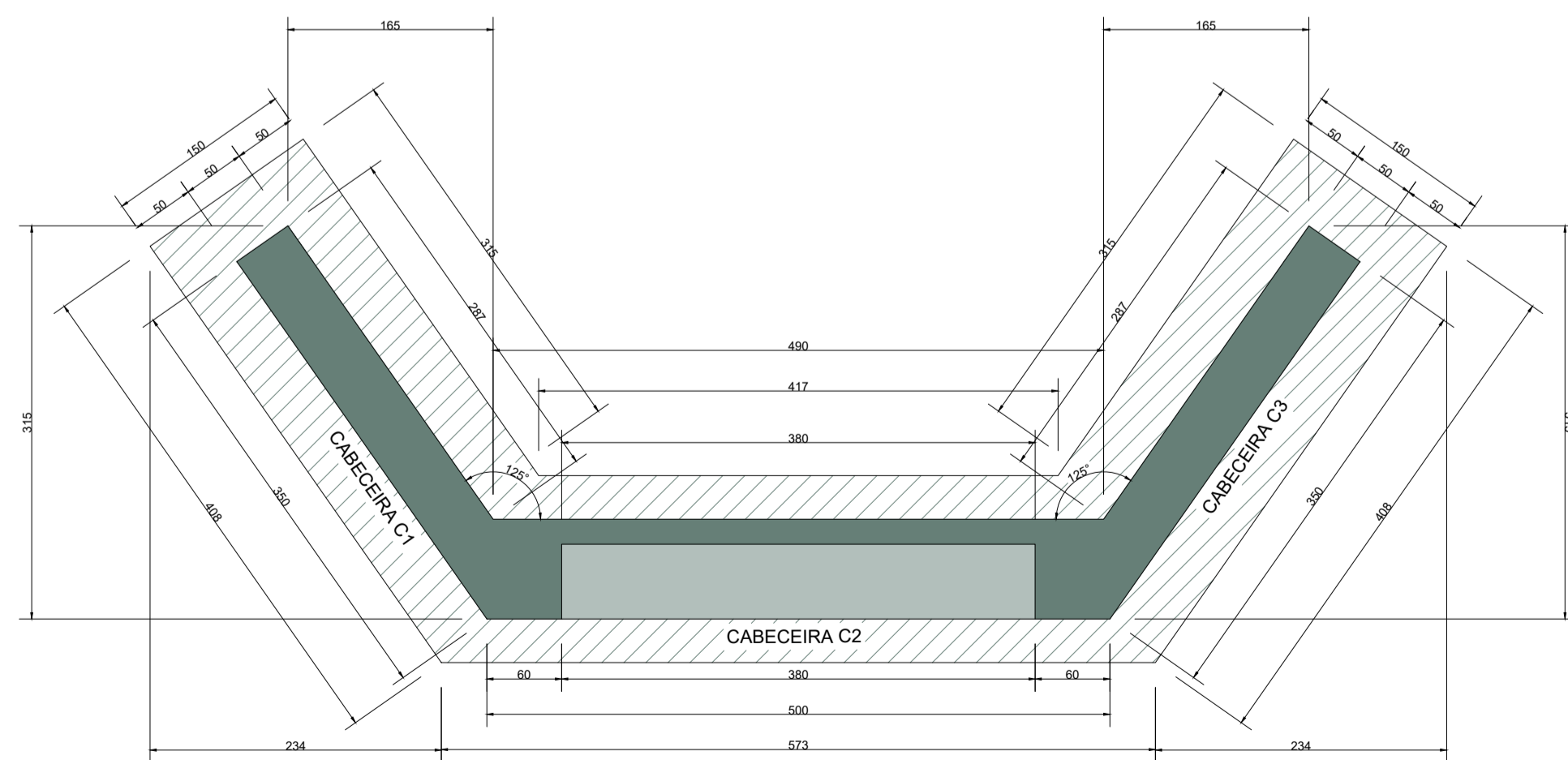


Planta de Formas

## Armação Cabeceiras

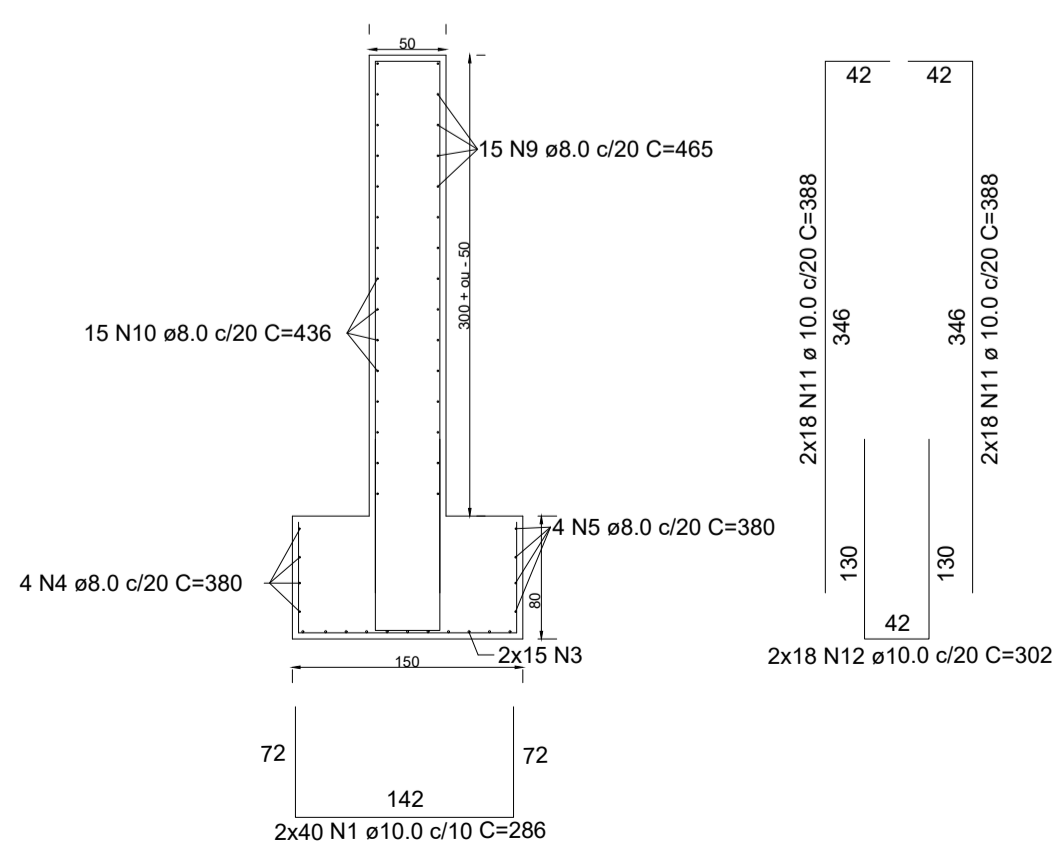


## Armação Fundação

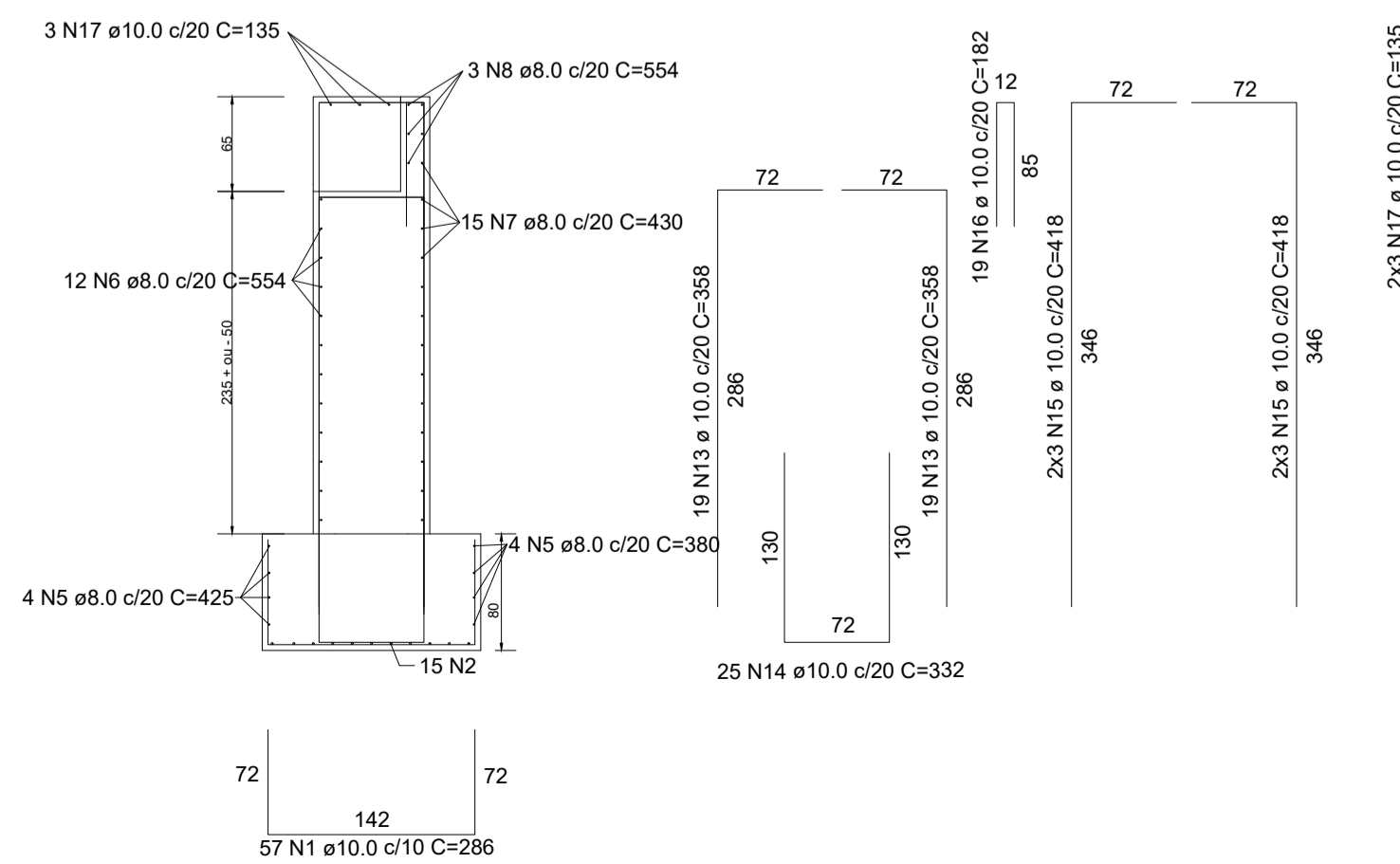


Planta de Formas - Detalhe

## Cabeceiras C1 e C3

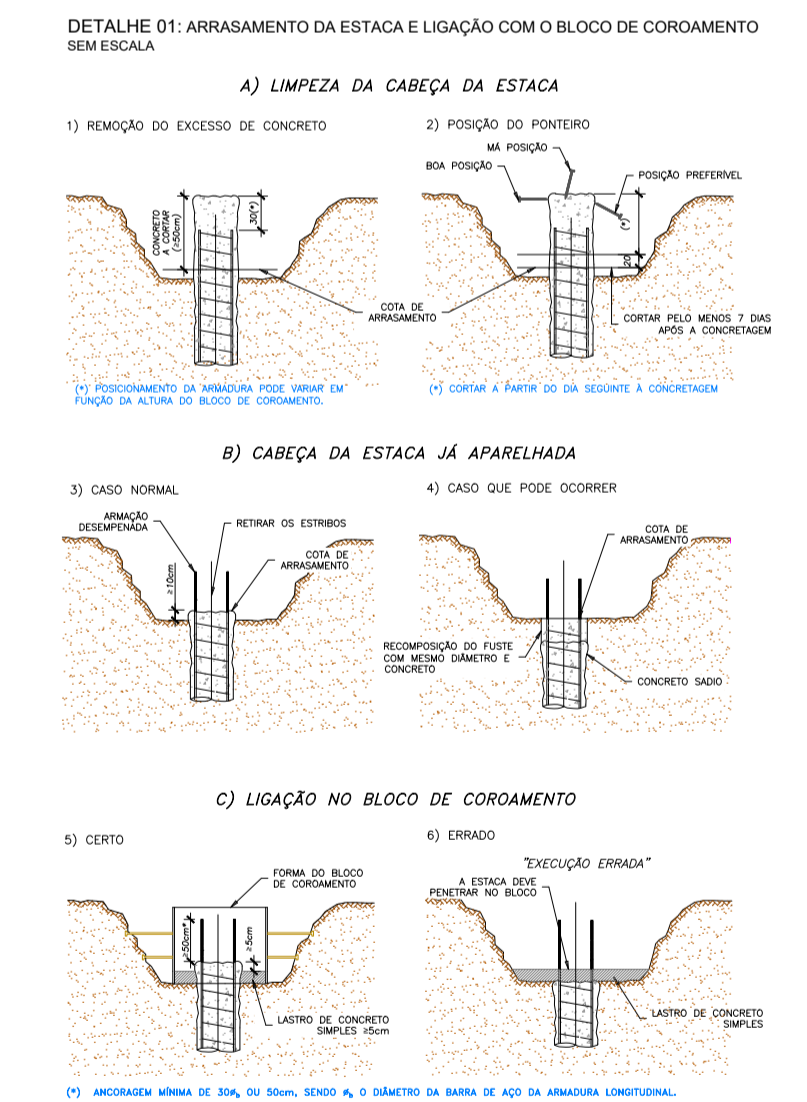
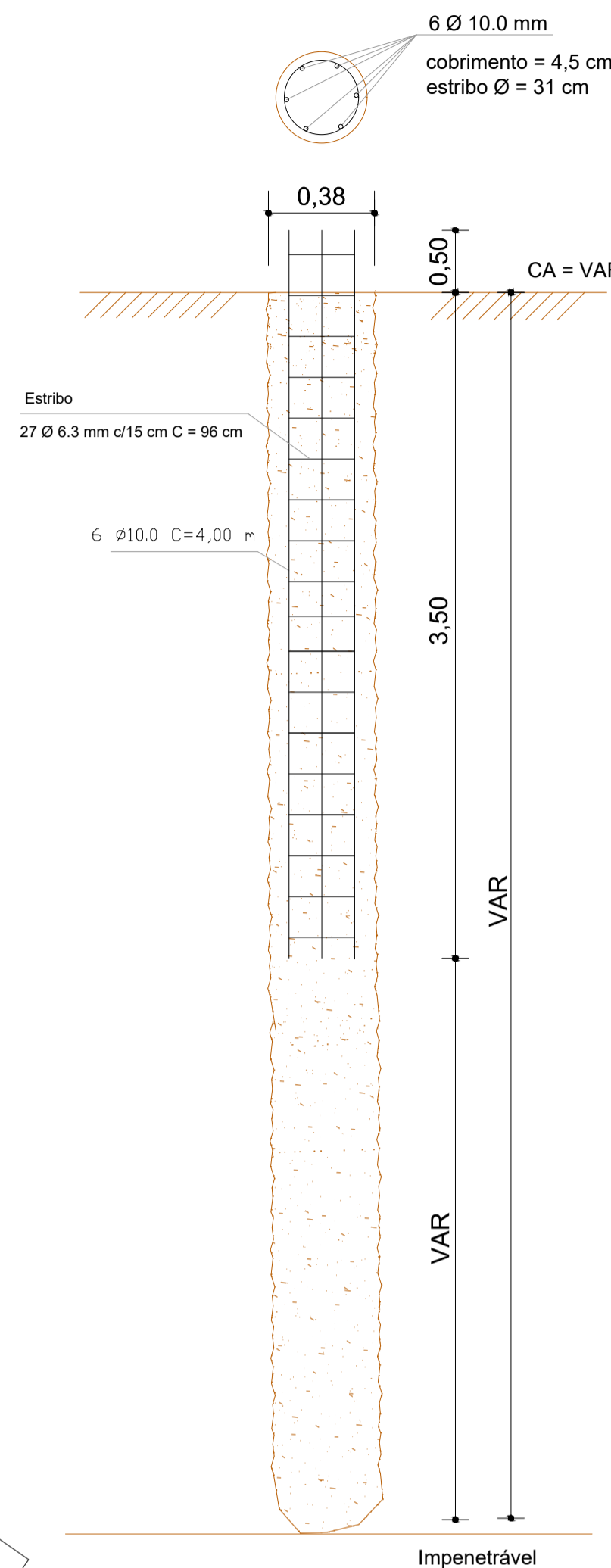


## Cabeceiras C2

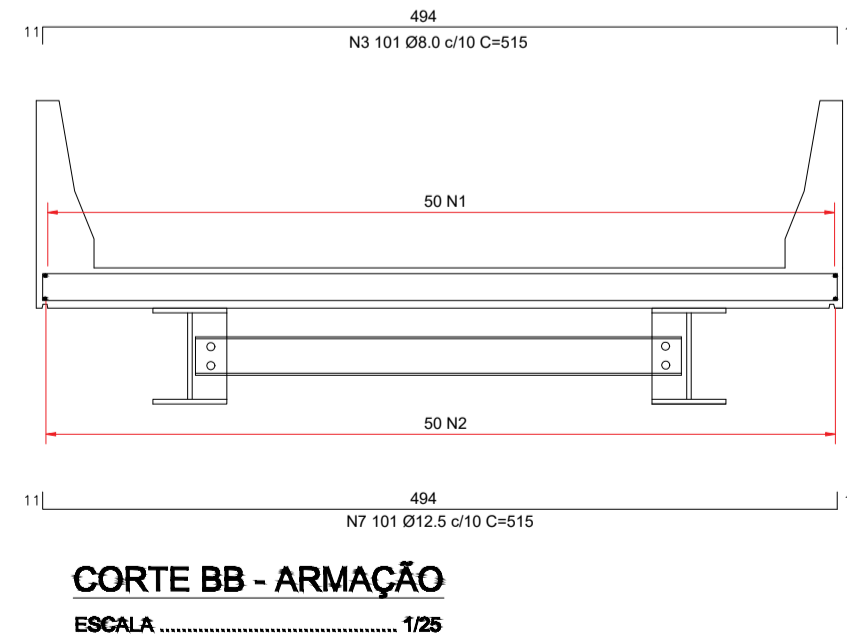
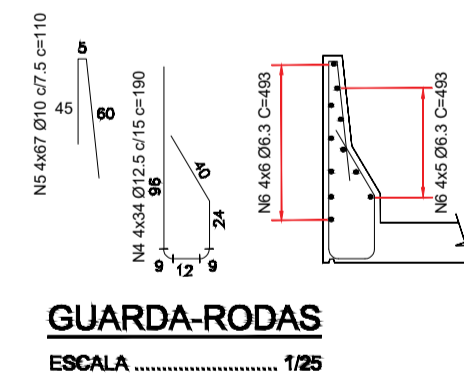
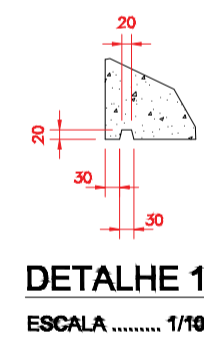
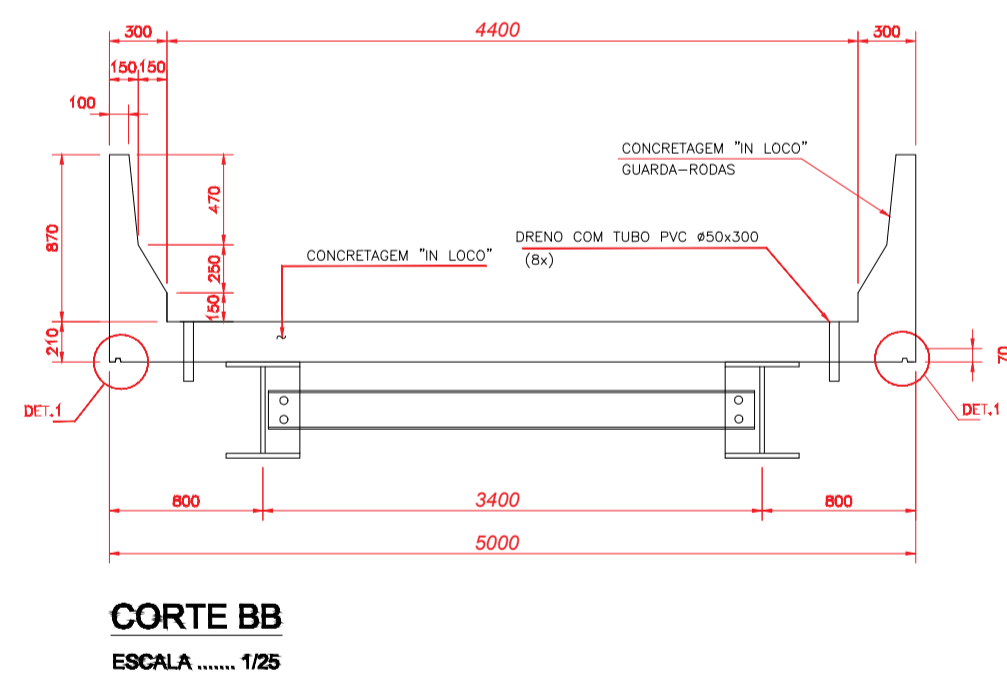
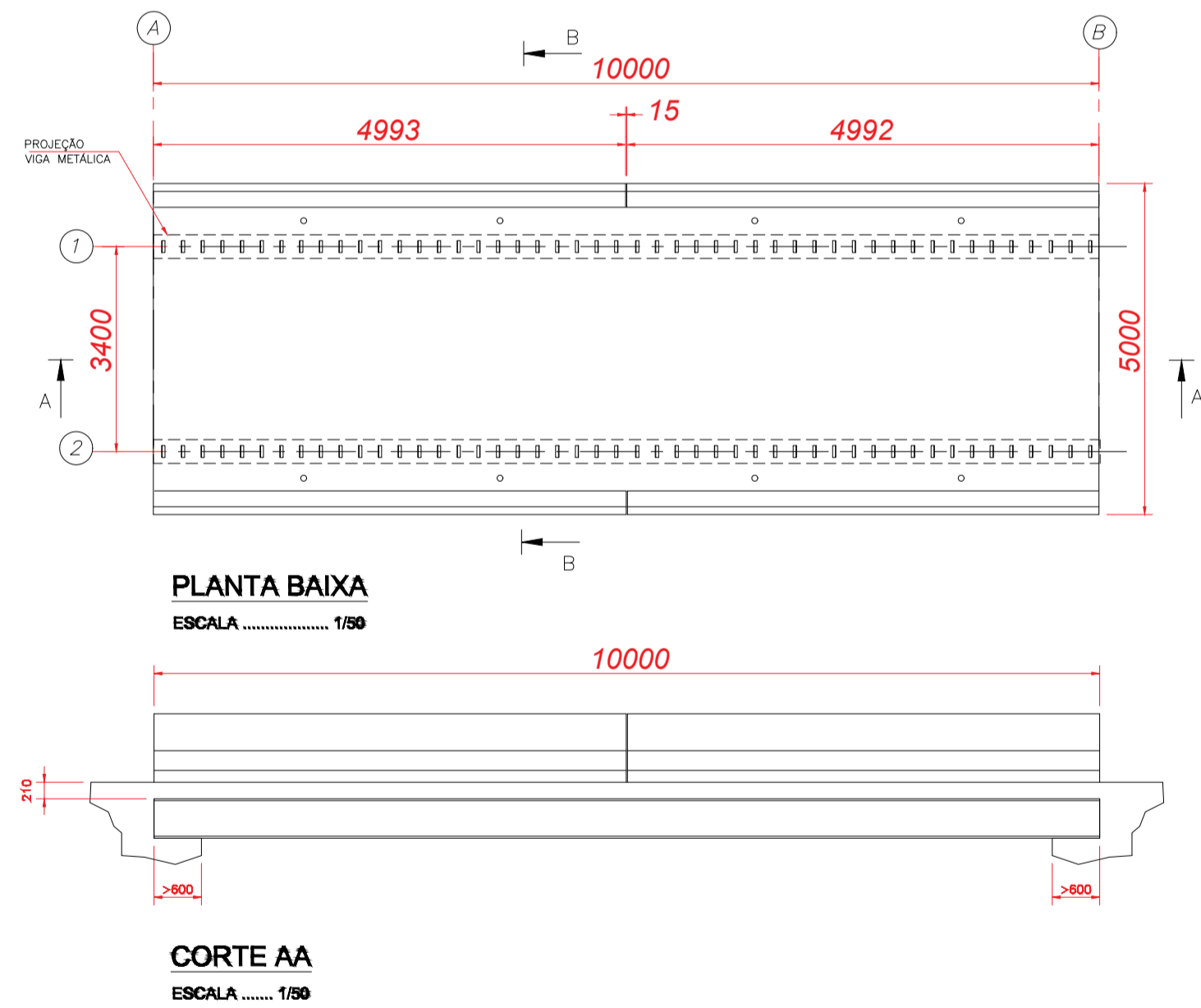
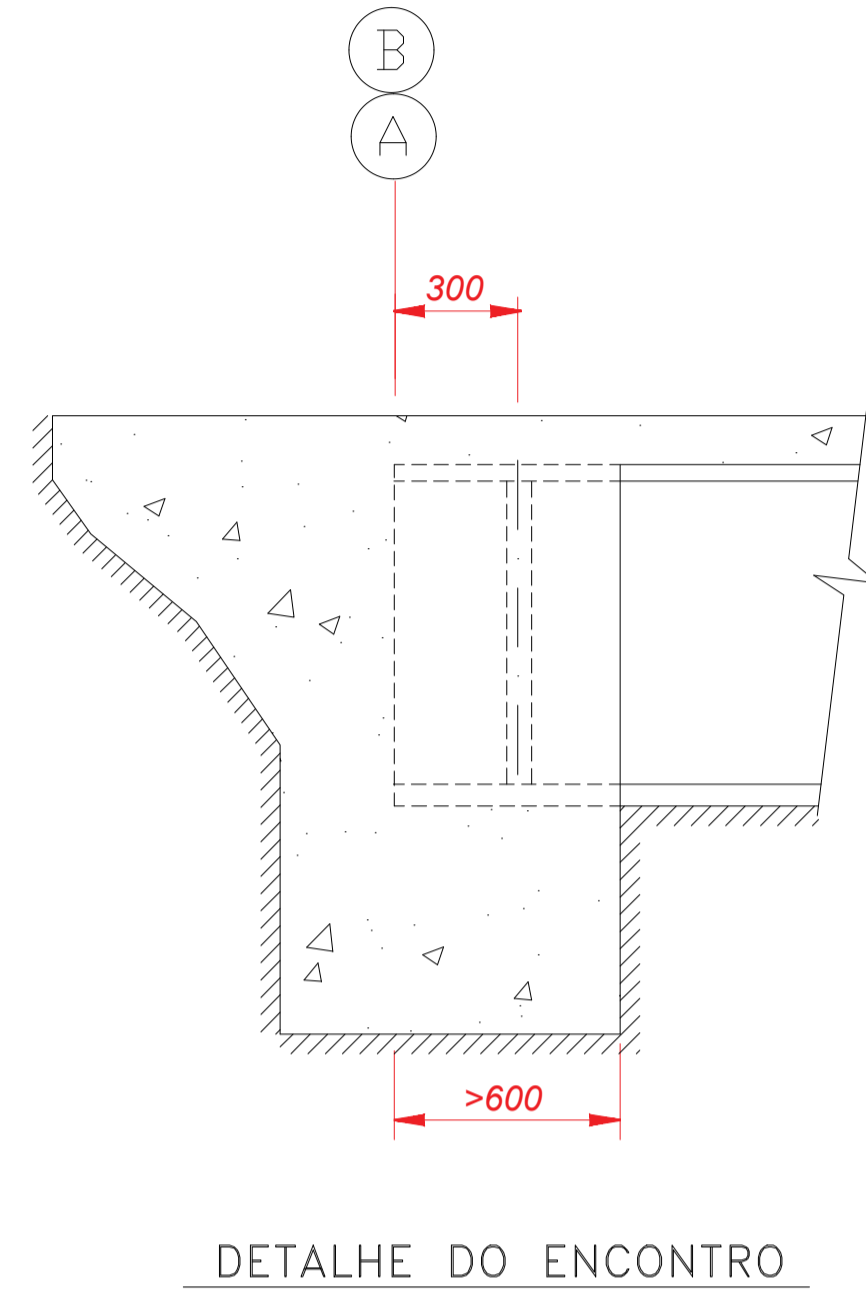
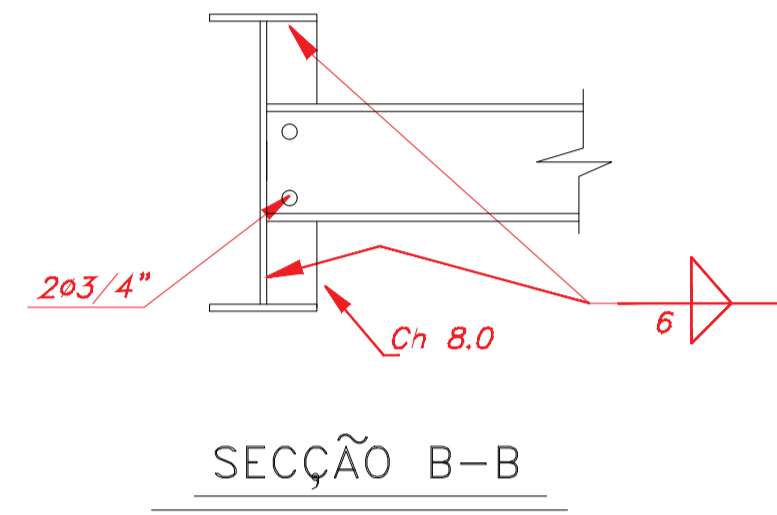
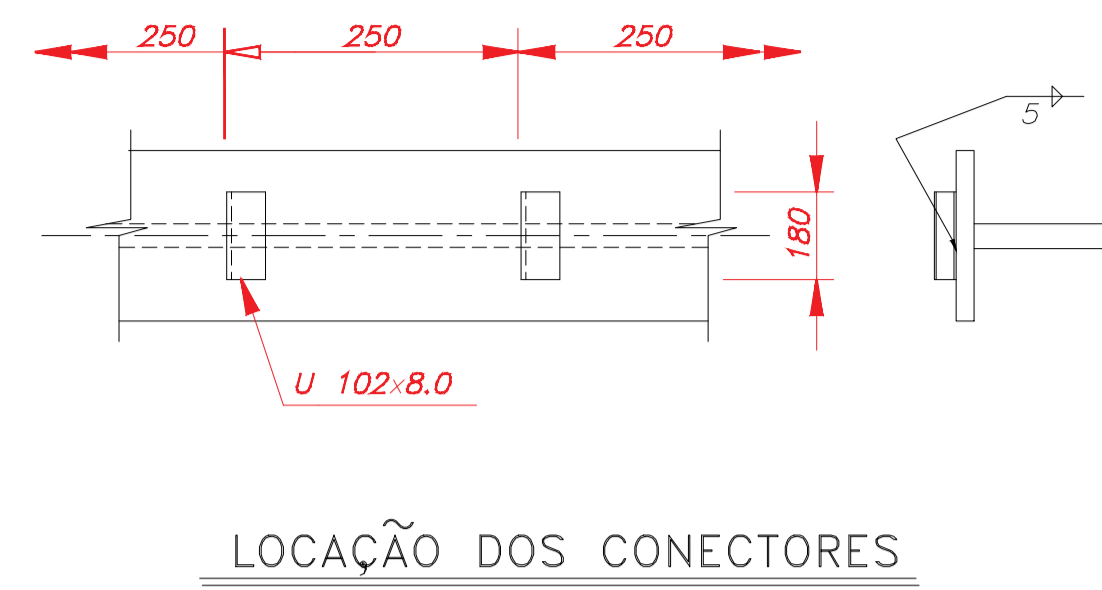
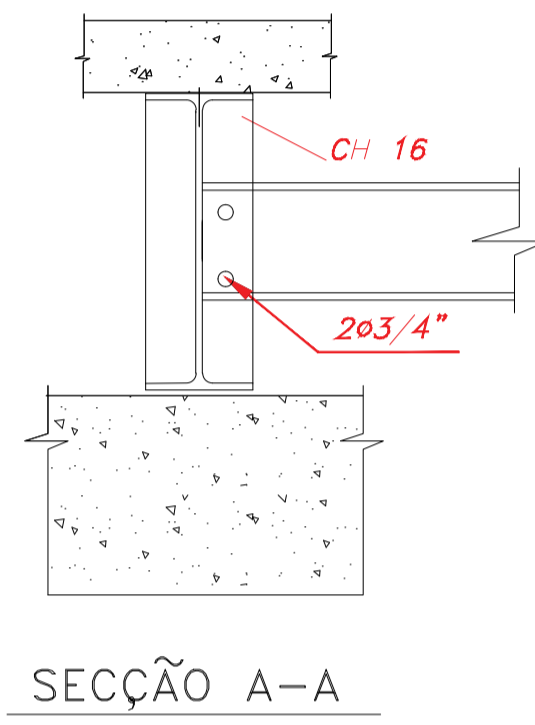
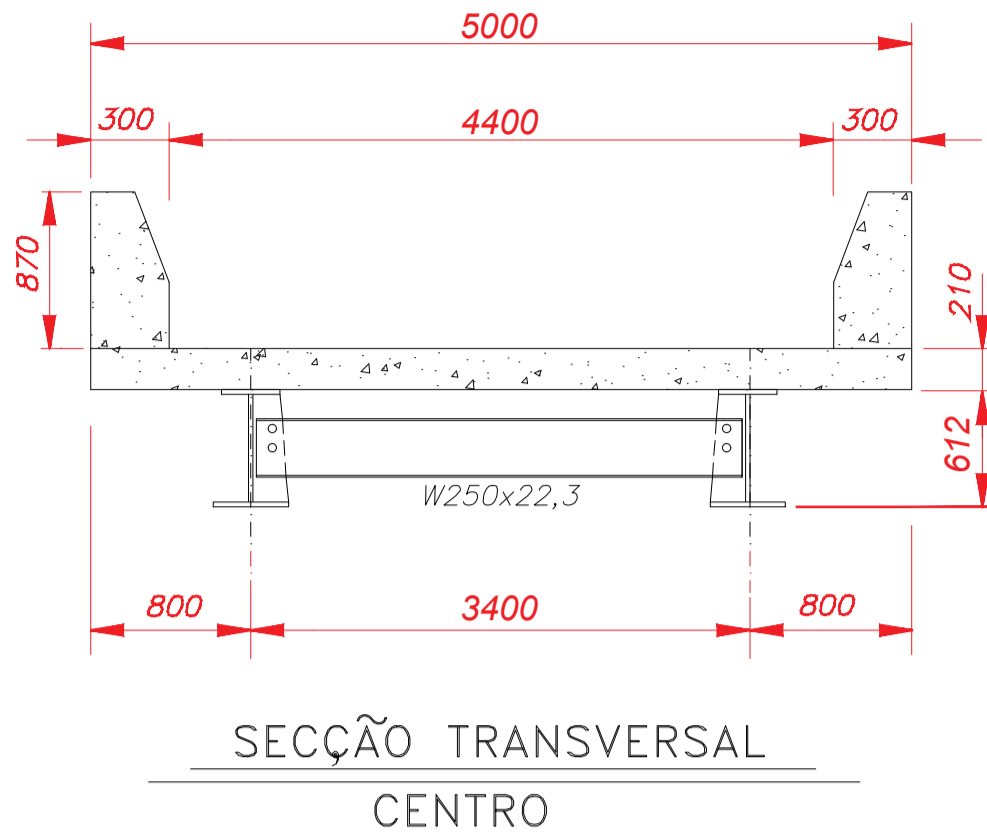
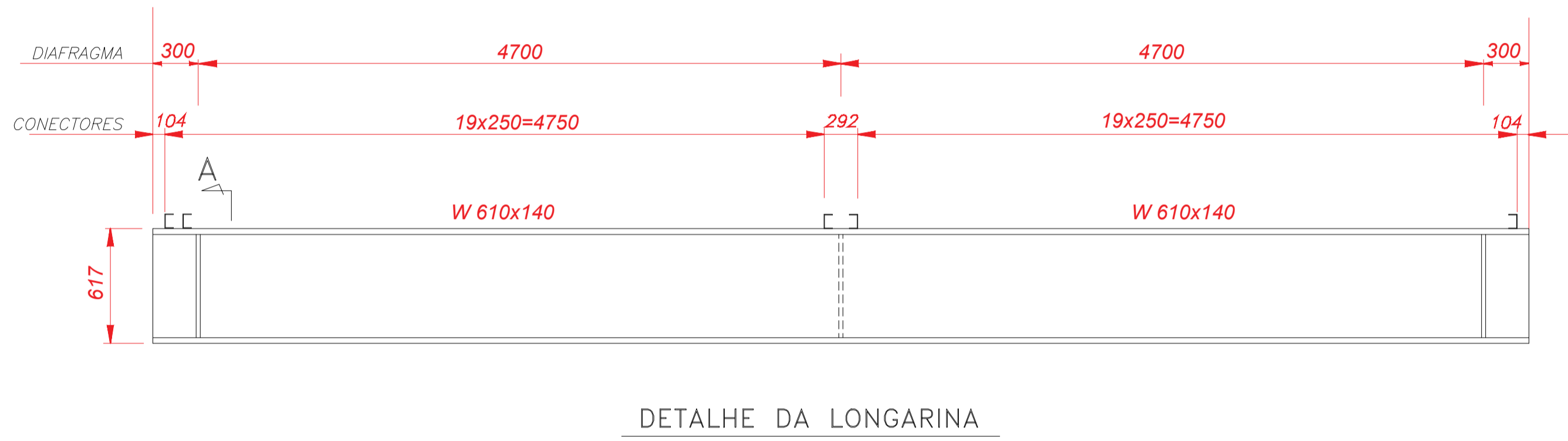
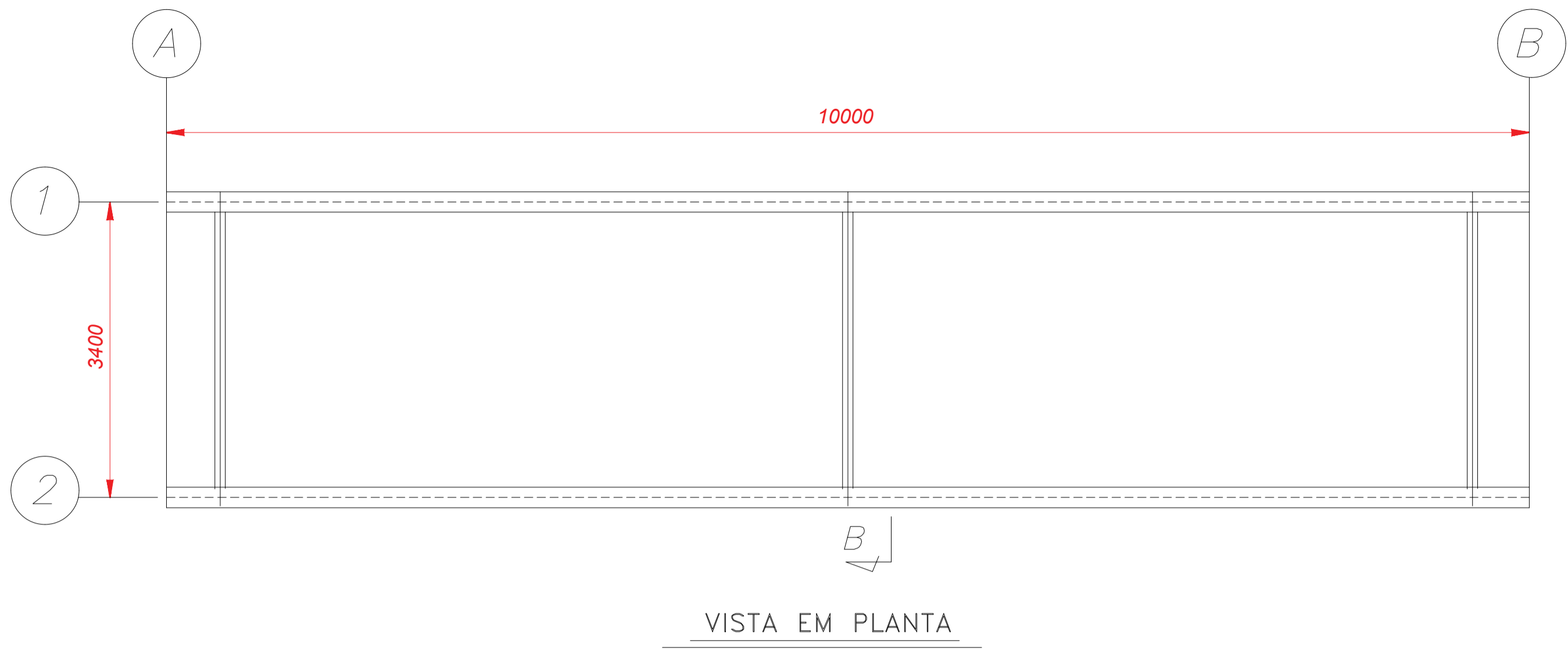


RESUMO DO AÇO			
AÇO	DIAM (mm)	C. TOTAL (m)	QUANT + 10% (Barras)
CA50	8,0	1220,9	112
CA50	10,0	2619,6	241
PESO TOTAL (kg)			
CA50	2308,4		
Volume de concreto (C-25) =		77,0	m³
Área de forma =		211,35	m²

DETALHE - 10 x C38  
ESTACA STRAUSS - Ø38  
S/ESC.



PROJETO EXECUTIVO	
ENDEREÇO: DISTRITO CAPIM ROXO CAPARAÓ - MG	CONTEÚDO: CABECEIRAS EM CONCRETO ARMADO
RESP. TÉCNICO: HUGO AFONSO TAVARES CREA: MG-201118/D	
PROPRIETÁRIO: MUNICÍPIO DE CAPARAÓ CNPJ: 16.114.249/0001-93	
DATA: Março/2026	QUADRO DE ÁREAS: META 8
OBSERVAÇÕES:	
FOLHA 01/02	
Prefeitura Municipal de Caparaó	
Avenida Américo Vespúcio de Carvalho, Nº 120 CEP: 36834-000, centro, Caparaó - MG	



CONCRETO ESTRUTURAL  $F_{ck} = 25 \text{ MPa}$   
VOL= 13,70 m<sup>3</sup>  
ÁREA DE FORMAS= 92,94 m<sup>2</sup>

- NOTAS:**
- LAJE DIMENSIONADA PARA TREM TIPO 48m.
  - COBRIMENTO DE 3,0cm.
  - DIMENSÕES DE FORMAS E Ø DAS BARRAS EXPRESSAS EM "mm", ARMAÇÃO EM "mm", EXCETO ONDE INDICADO.
  - ALTERNAR AS EMENDAS.

RESUMO DO AÇO			
AÇO	DIAM (mm)	C. TOTAL (m)	QUANT + 10% (Barras)
CASO	6,3	216,9	20
	8	1650,2	152
	10	294,8	28
	12,5	778,6	72
PESO TOTAL (kg)			
CASO	1800,2		
Volume de concreto (C-25) =		13,7	m <sup>3</sup>
Área de forma =		92,94	m <sup>2</sup>

PROJETO EXECUTIVO		
ENDEREÇO: DISTRITO CAPIM ROXO CAPARAÓ - MG	CONTEÚDO: TABULEIRO E GUARDA-RODAS EM CONCRETO ARMADO	
RESP. TÉCNICO: HUGO AFONSO TAVARES CREA: MG-201118/O		
PROPRIETÁRIO: MUNICÍPIO DE CAPARAÓ CNPJ: 18.114.249/0001-93		
DATA: Março/2026	QUADRO DE ÁREAS:	OBSERVAÇÕES: META 8
<b>FOLHA</b> 02/02	Prefeitura Municipal de Caparaó	
Avenida América Vespúcio de Carvalho, Nº 120 CEP: 36834-000, centro, Caparaó - MG		